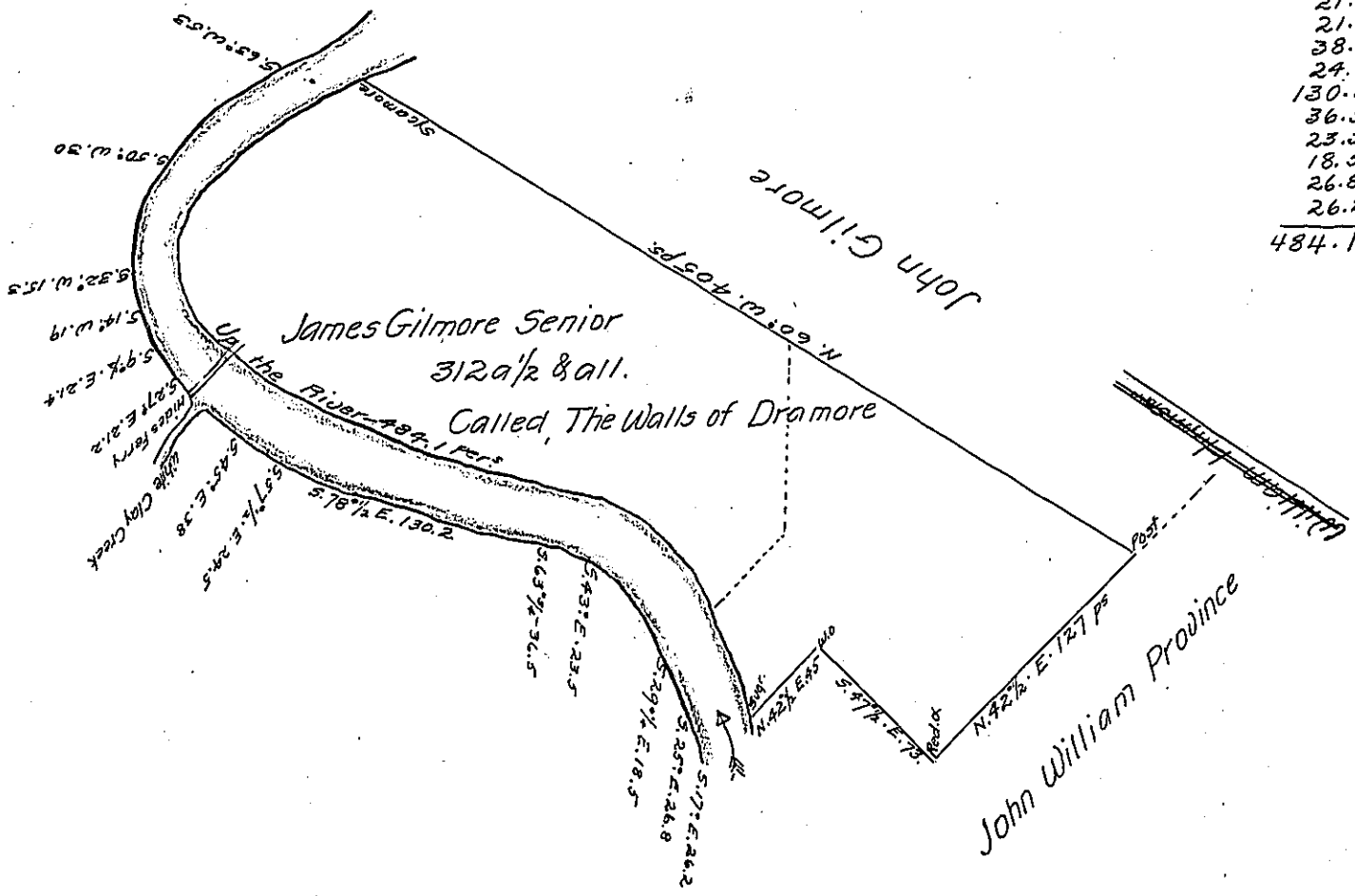


Dist: up R.—
from Sycamore

- 53
- 30
- 15.3
- 19
- 21.4
- 21.2
- 38.
- 24.5
- 130.2
- 36.5
- 23.5
- 18.5
- 26.8
- 26.2
-
- 484.1



Situated on the East Side of Monongahela River opposite the Mouth of
 White clay Creek in German Township Fayette County and Surveyed the 1st.
 Day of March 1787 In pursuance of a Warrant Dated the 25th. Day of May
 1785.

pr

To John Lukens Esq.
 Surveyor Generale

Alexander McGlean Dep^y

this Survey Confirmed by Judgmt of Bd. PY

2d. Apl. 1787 in case of Gilmore

vs.
 Pitzer & Harrison

IN TESTIMONY that the above is a copy of the original remaining on file in
 the Department of Internal Affairs of Pennsylvania, made
 conformably to an Act of Assembly approved the 16th day of
 February, 1833, I have hereunto set my Hand and caused
 the Seal of said Department to be affixed at Harrisburg,
 thistenth..... day of..... December..... 1904

Grace A. Brown
 Secretary of Internal Affairs.